



MATTHEW  
GRIBBEN  
ARCHITECTURE

STUDIO 3 21 MARY STREET SURRY HILLS NSW 2010 AUSTRALIA  
TELEPHONE +61 2 9281 9611 FACSIMILE +61 2 9281 9612  
AIA NZIA ABN 86 102 515 328 NOMINATED ARCHITECT 6887  
[WWW.MATTHEWGRIBBEN.COM.AU](http://WWW.MATTHEWGRIBBEN.COM.AU)

December 2010

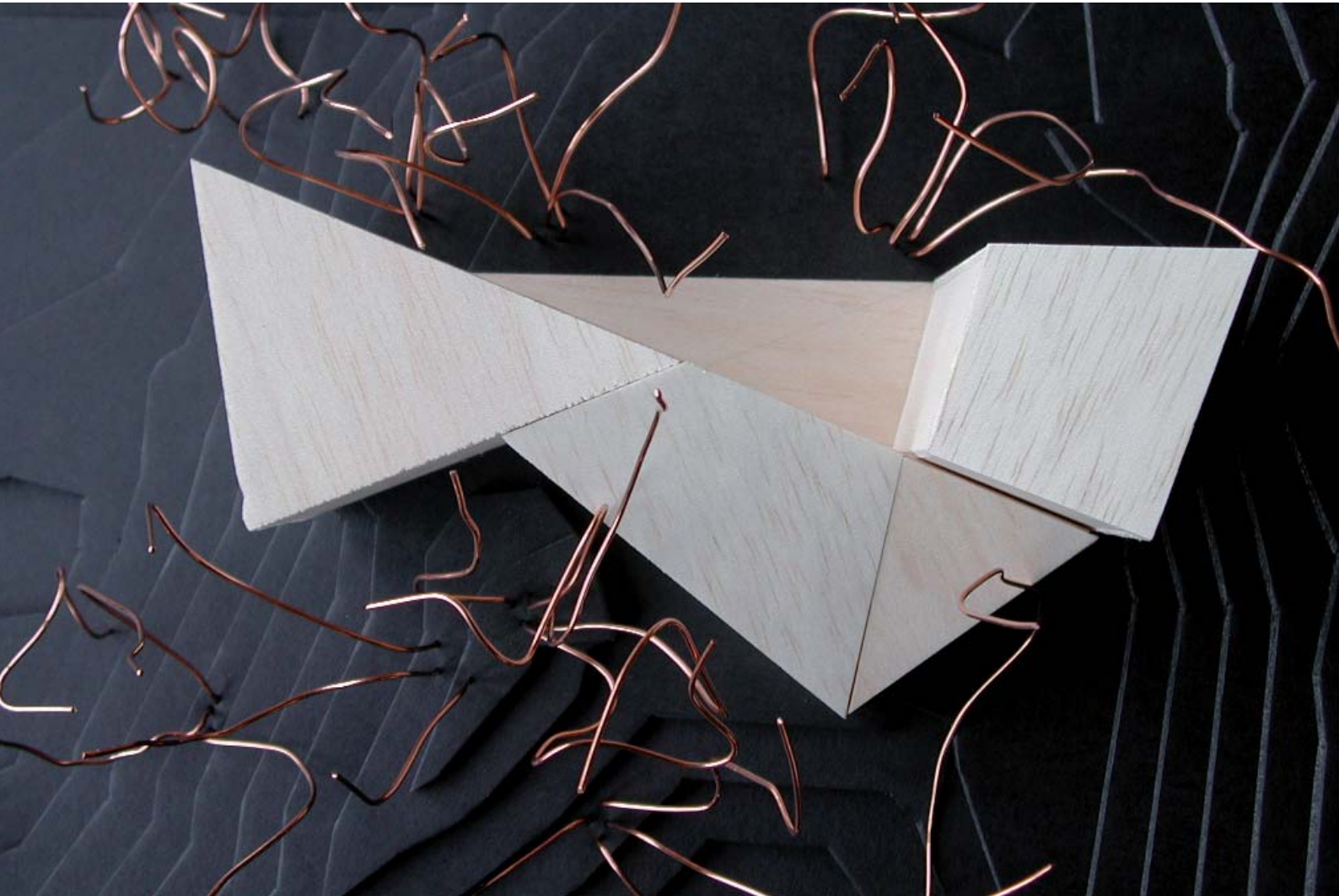


**Pohutukawa House**  
150m<sup>2</sup> Beach House  
Piha, New Zealand  
Construction 2008-2009



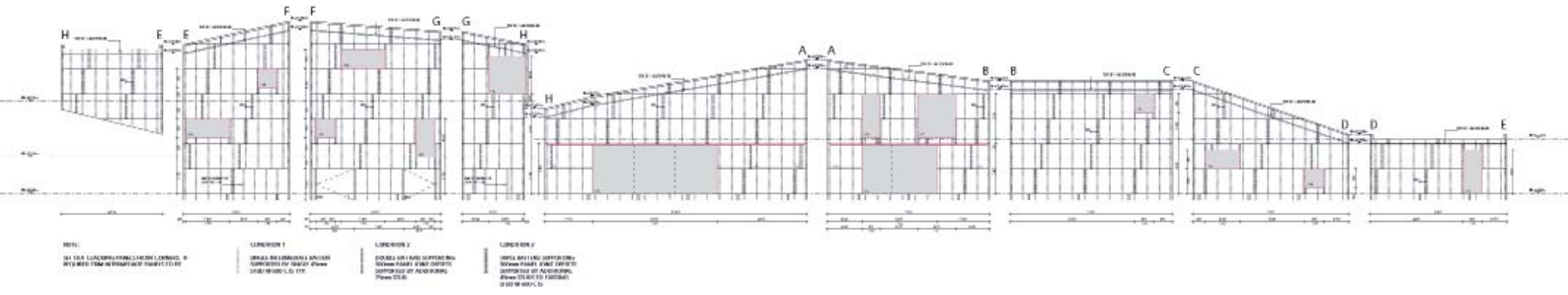
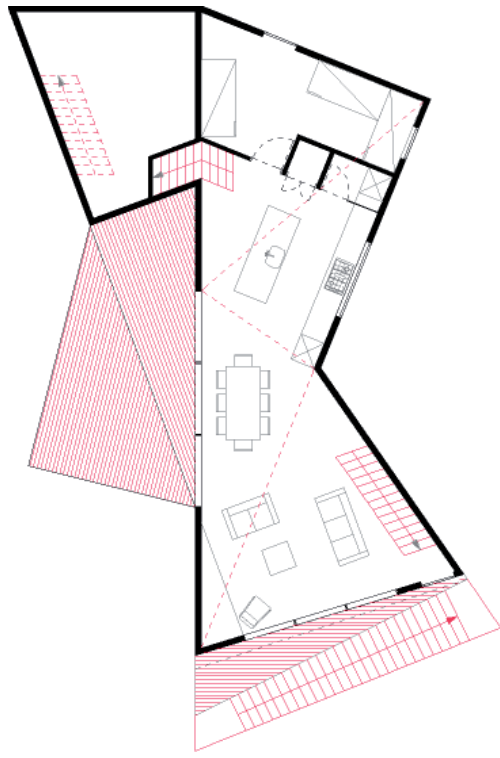


Pohutukawa House





# Pohutukawa House

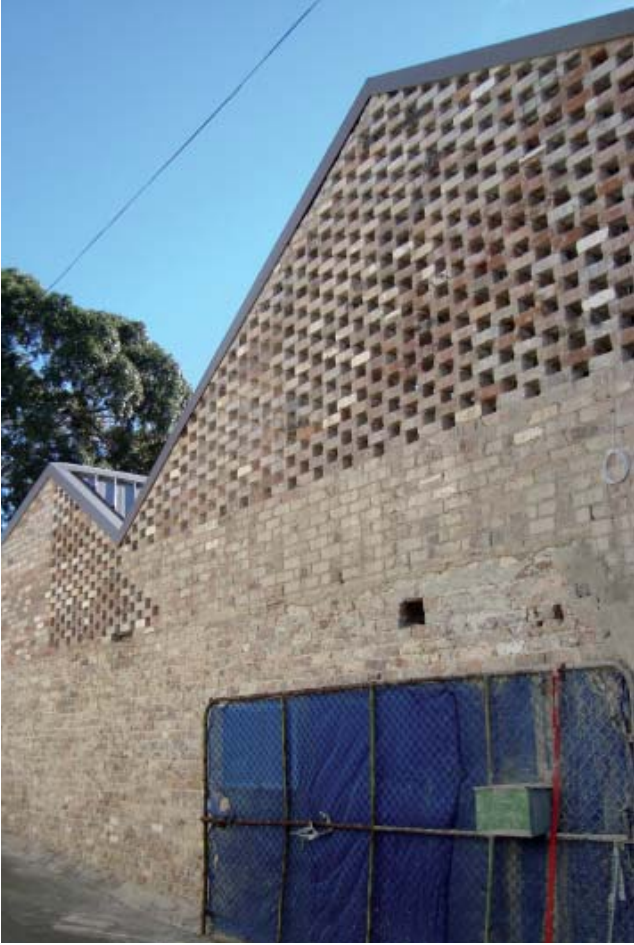


**Five Courts House**  
300m<sup>2</sup> 2 storey house  
Sydney, NSW  
Design 2008-2009  
Construction 2009-2010





**Five Courts House**  
Construction Site June 2010





**Tautari House**

325m<sup>2</sup> 2 storey house  
Auckland, New Zealand  
Design 2000-2001  
Construction 2003-2004

**NZIA Award for Architecture 2005**



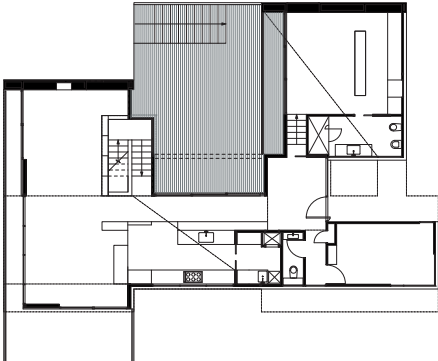


Tautari House

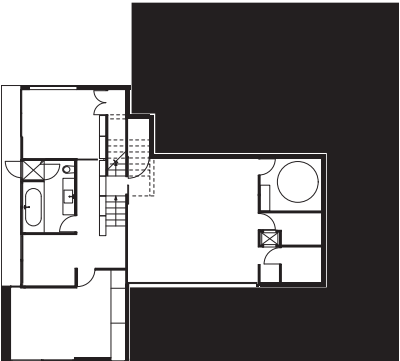




Tautari House



upper level floor plan



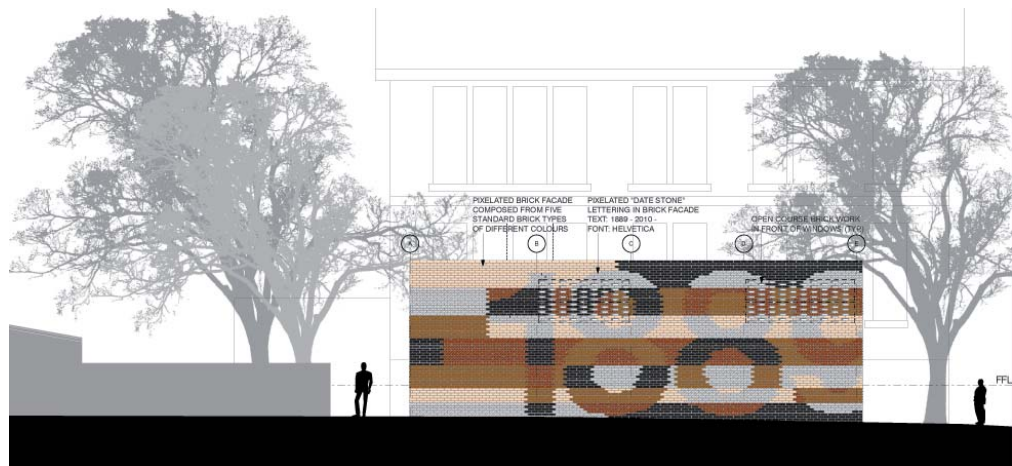
lower level floor plan



cross section



**Infants School Newtown**  
150m<sup>2</sup> school library  
Sydney, NSW  
Design 2009  
Construction 2010-2011



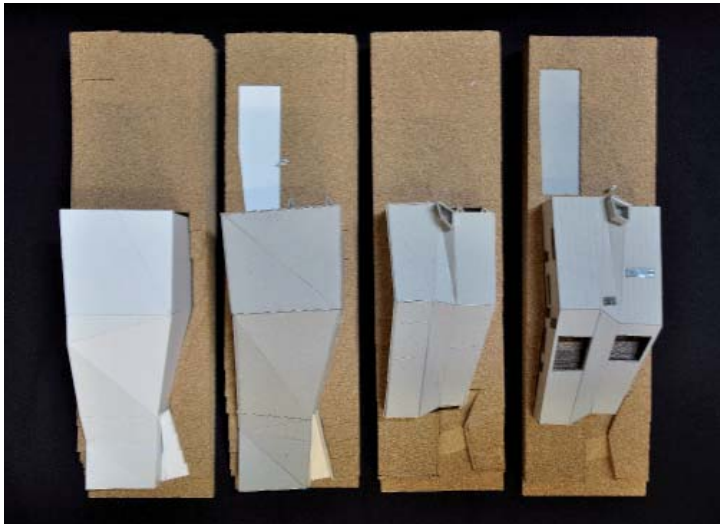


Infants School Newtown  
Construction Site December 2010





**Ridge Contour House**  
285m<sup>2</sup> 2 storey house  
Sydney, NSW  
Design 2008-2009  
Construction 2010-2011

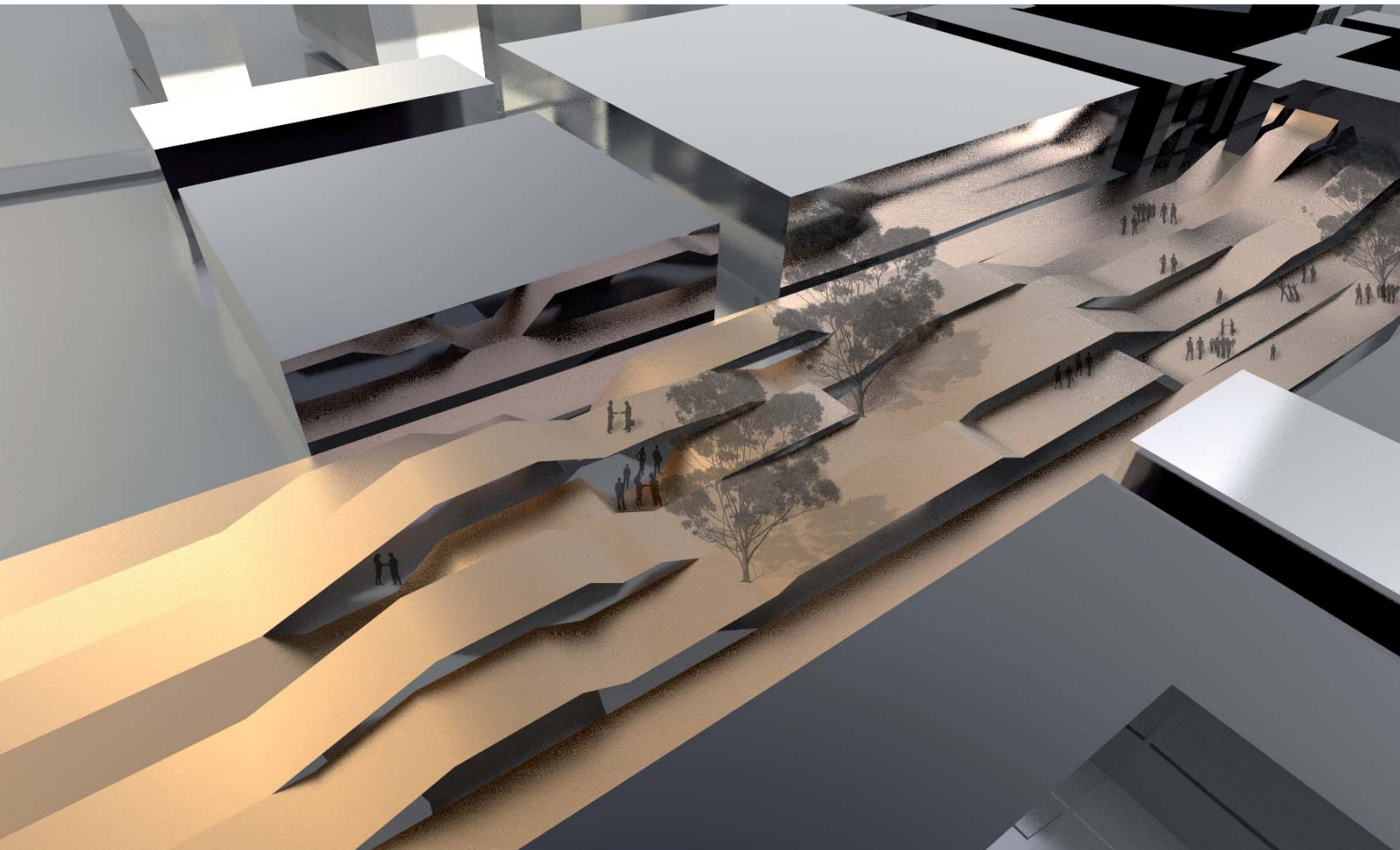
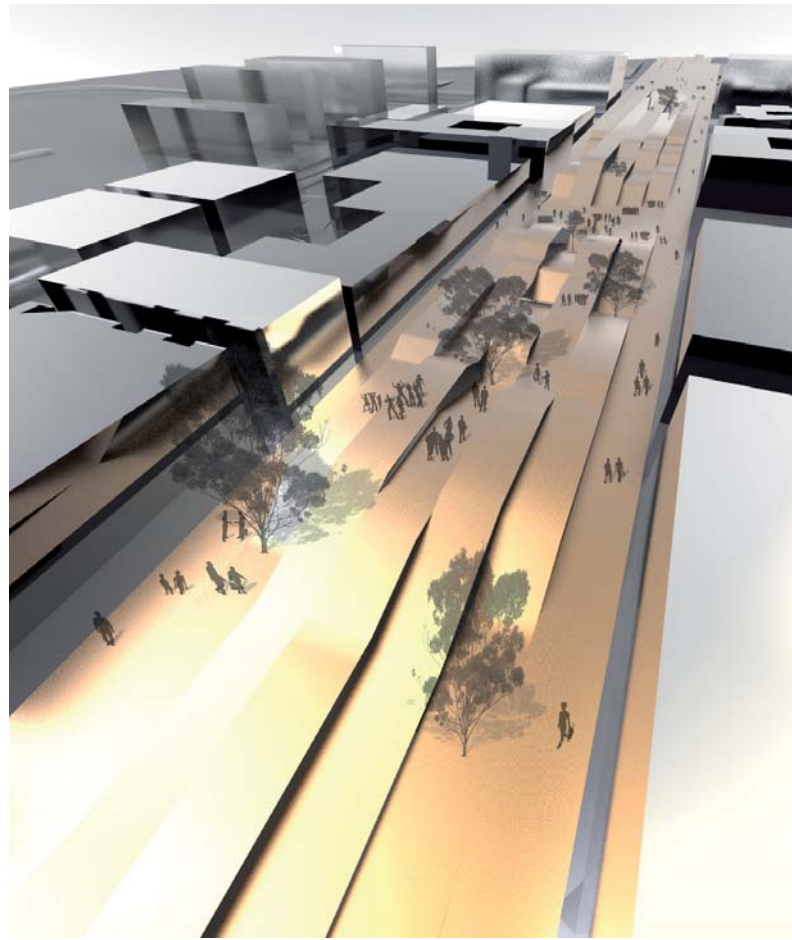






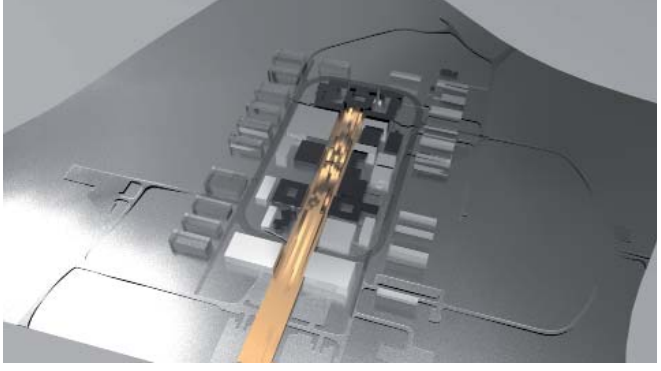
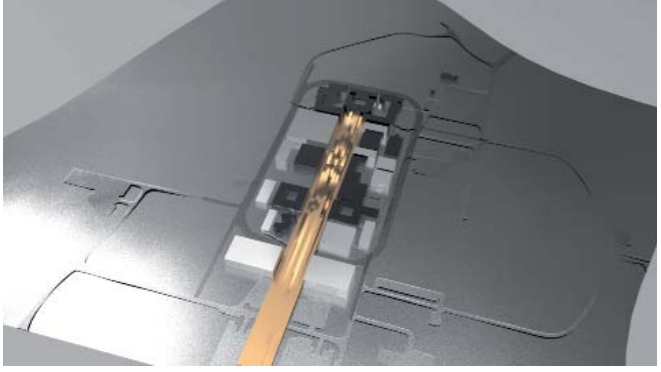
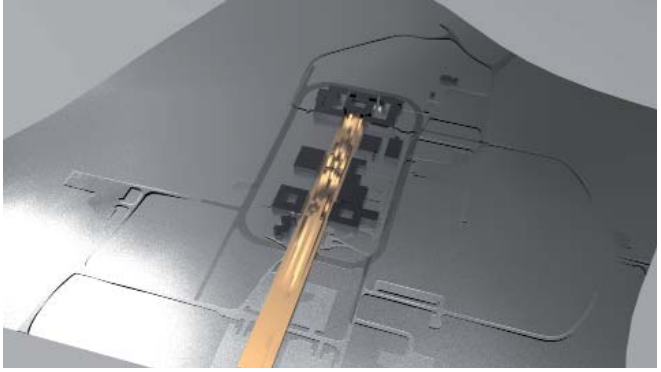
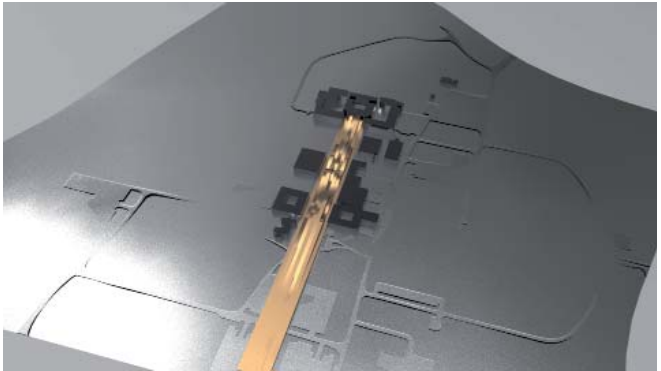
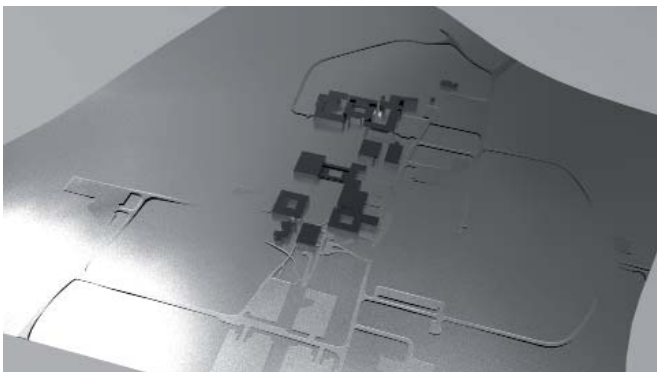
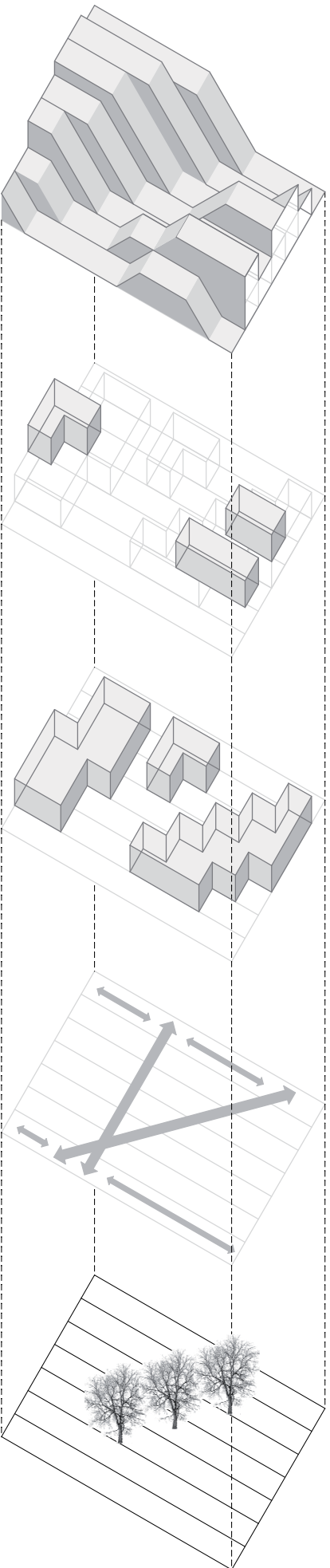


**University of Canberra**  
Campus Masterplan  
Canberra, ACT  
Competition Design 2010  
Matthew Gribben Architecture  
in collaboration with Silvester Fuller & ARUP





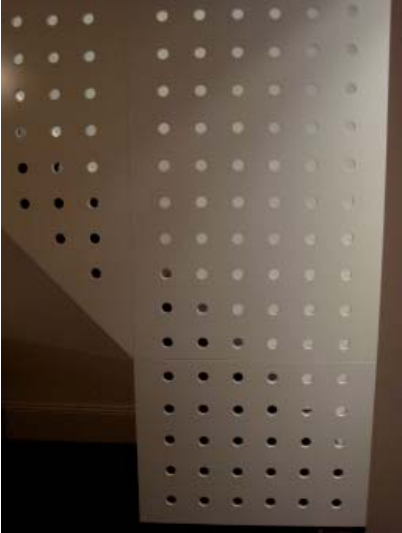
University of Canberra





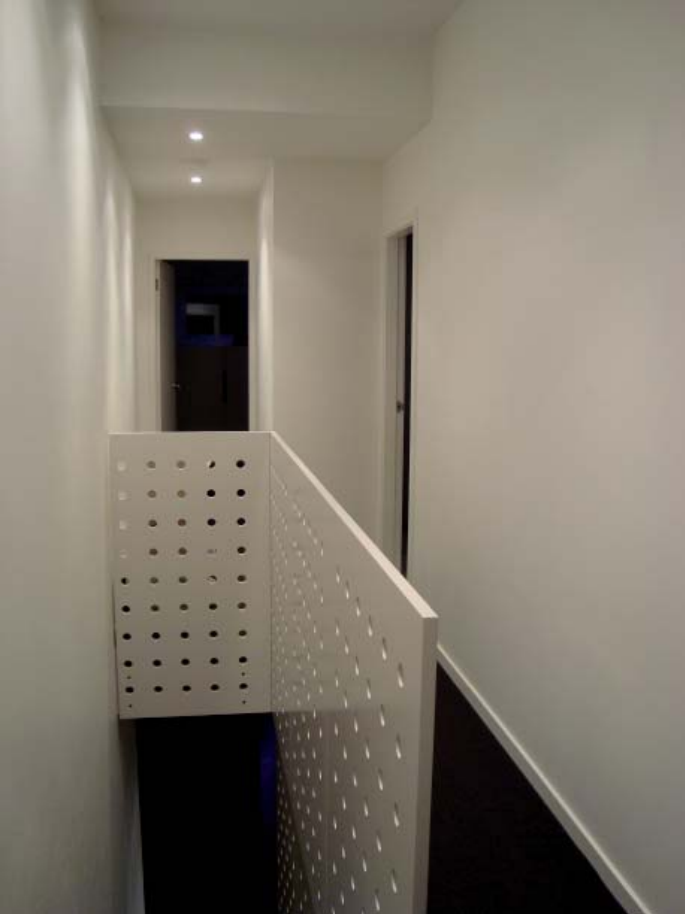
**Victoria Barracks House**

120m<sup>2</sup> 1880's terrace house renovation  
Sydney, NSW  
Design 2008  
Construction 2009-2010





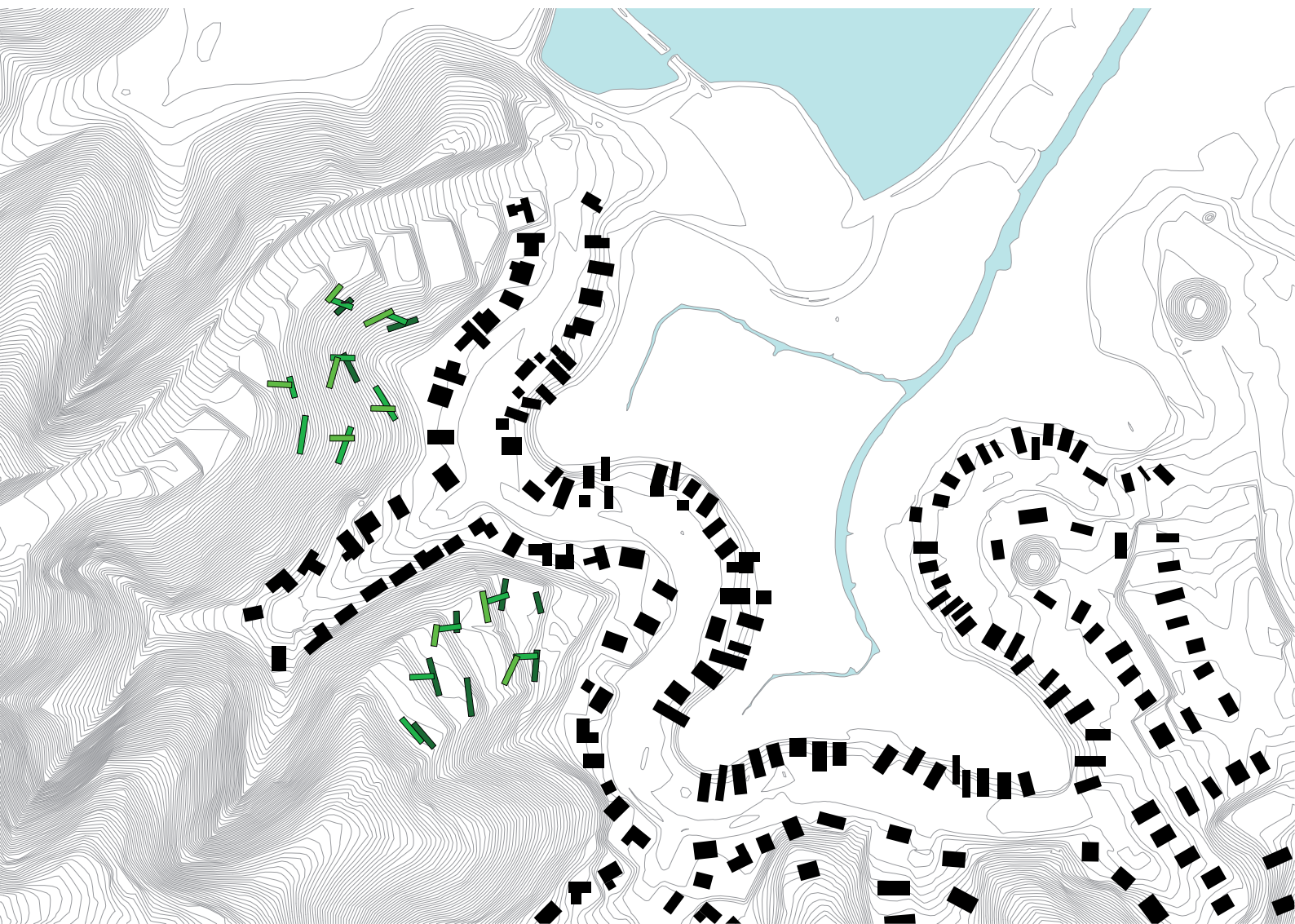
**Victoria Barracks House**  
Construction Site June 2010





**California Senior Housing**  
25,000 ft<sup>2</sup> Multiple Housing for Elderly  
Novato, CA  
Competition Design 2009

**New Aging Award 2010**  
University of Pennsylvania, Honourable Mention





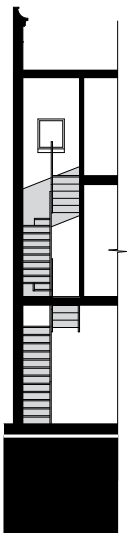
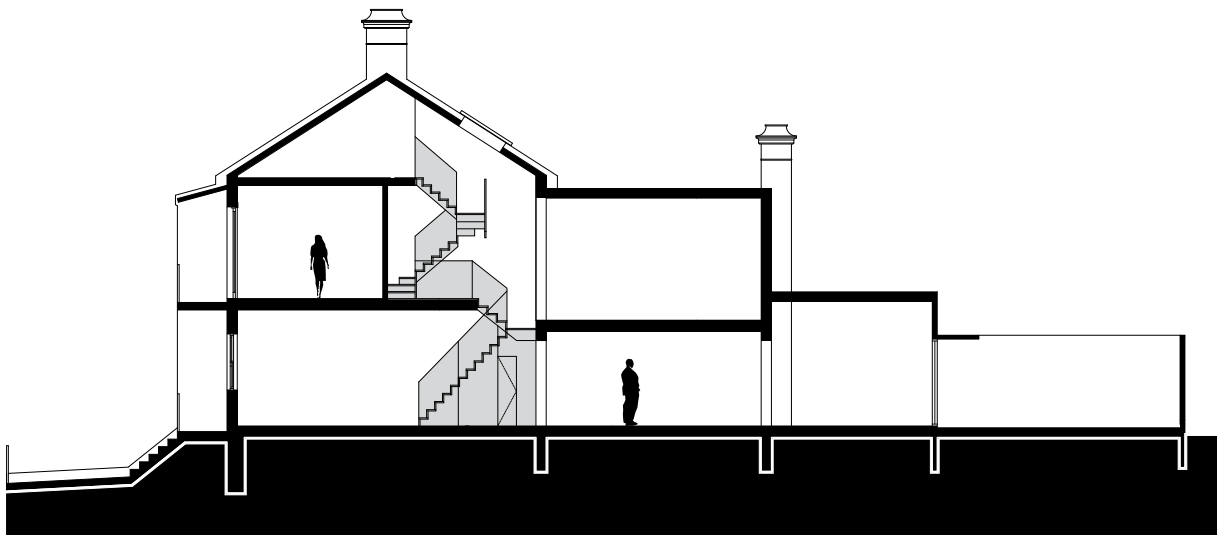
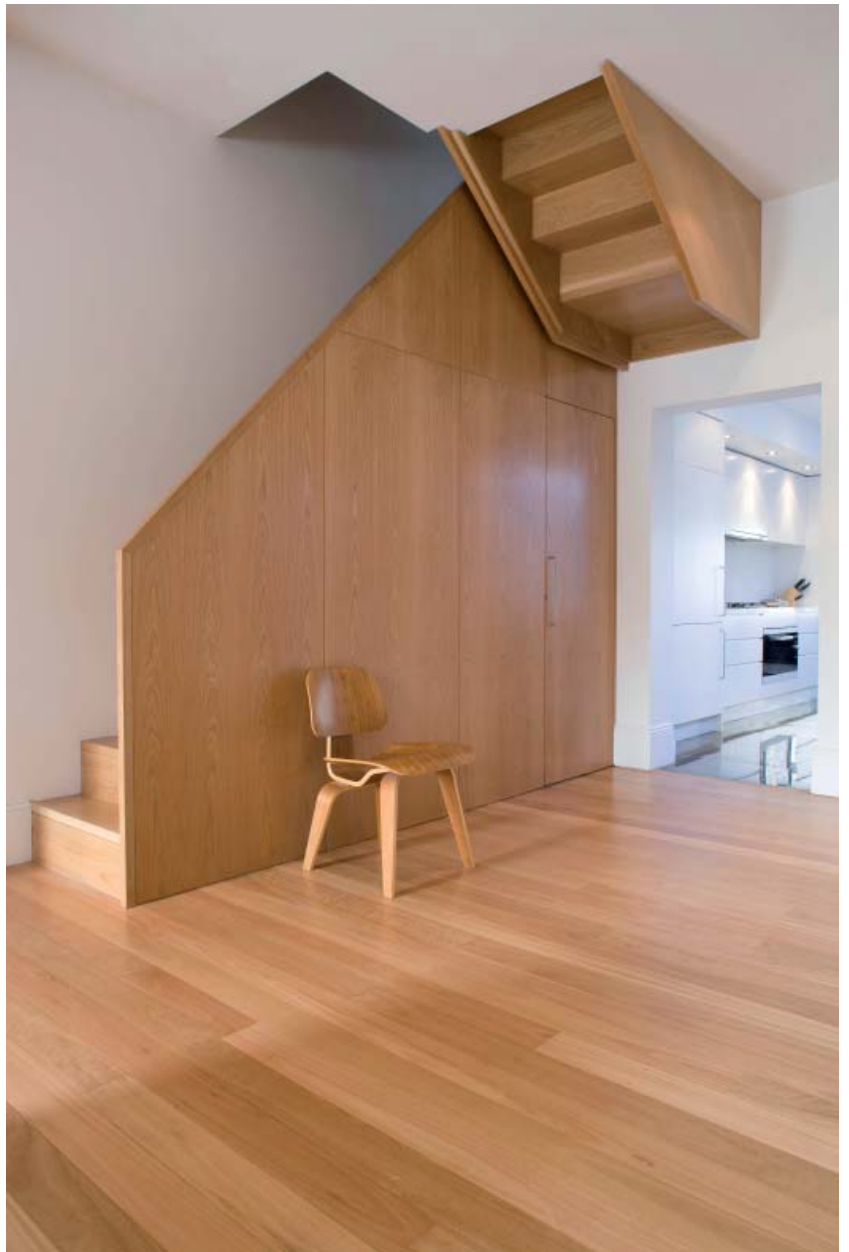
**Vanstone House**

190m<sup>2</sup> 1860's terrace house renovation

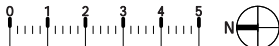
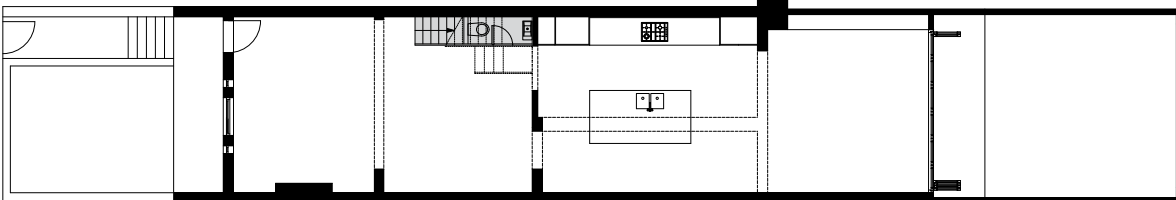
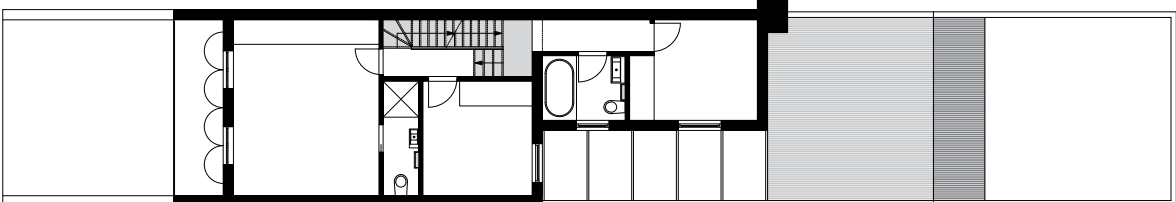
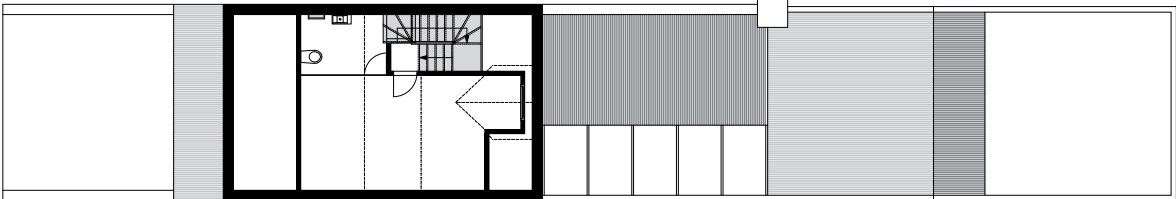
Paddington, NSW

Design 2006

Construction 2007



Vanstone House





**Forrest Place**

Public Sculpture & Urban Design

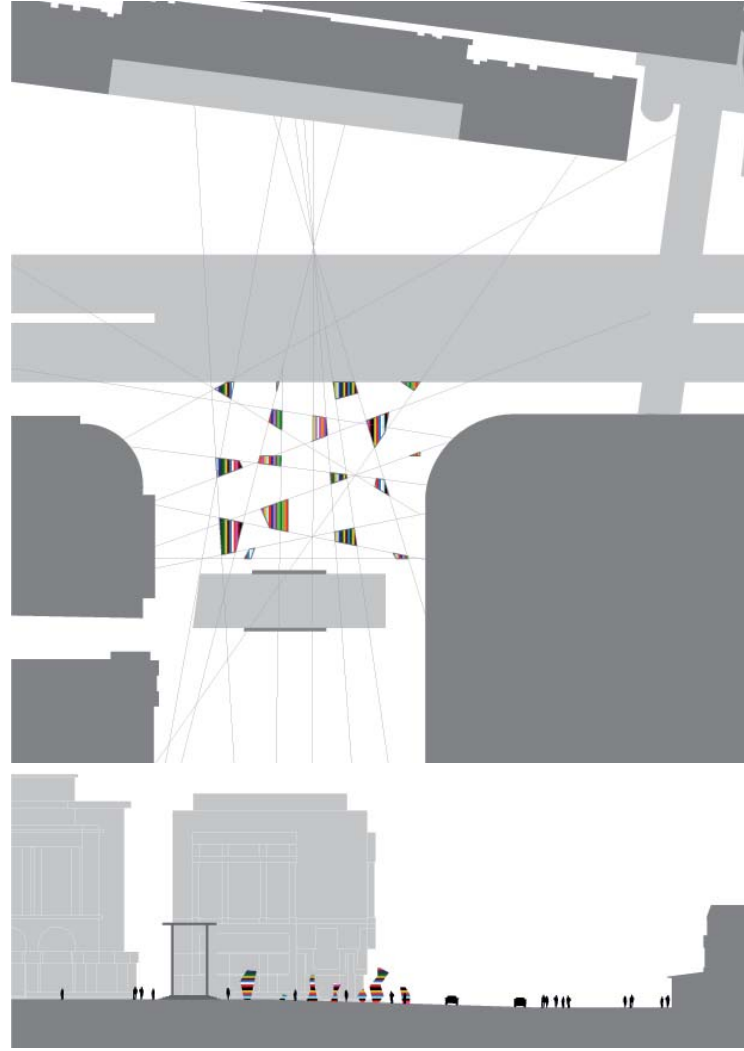
Perth, WA

Design 2009

Architectural Competition

In collaboration with artist

John Nicholson



**Butel Park Ski Chalets**

13 x 225 m<sup>2</sup> Alpine Rental Villas  
Butel Park, Arrowtown, New Zealand  
Design 2004  
Construction 2005





**Paparehia House**

480m<sup>2</sup> 2 storey house  
Auckland, New Zealand  
Design 2004  
Construction 2005-2006



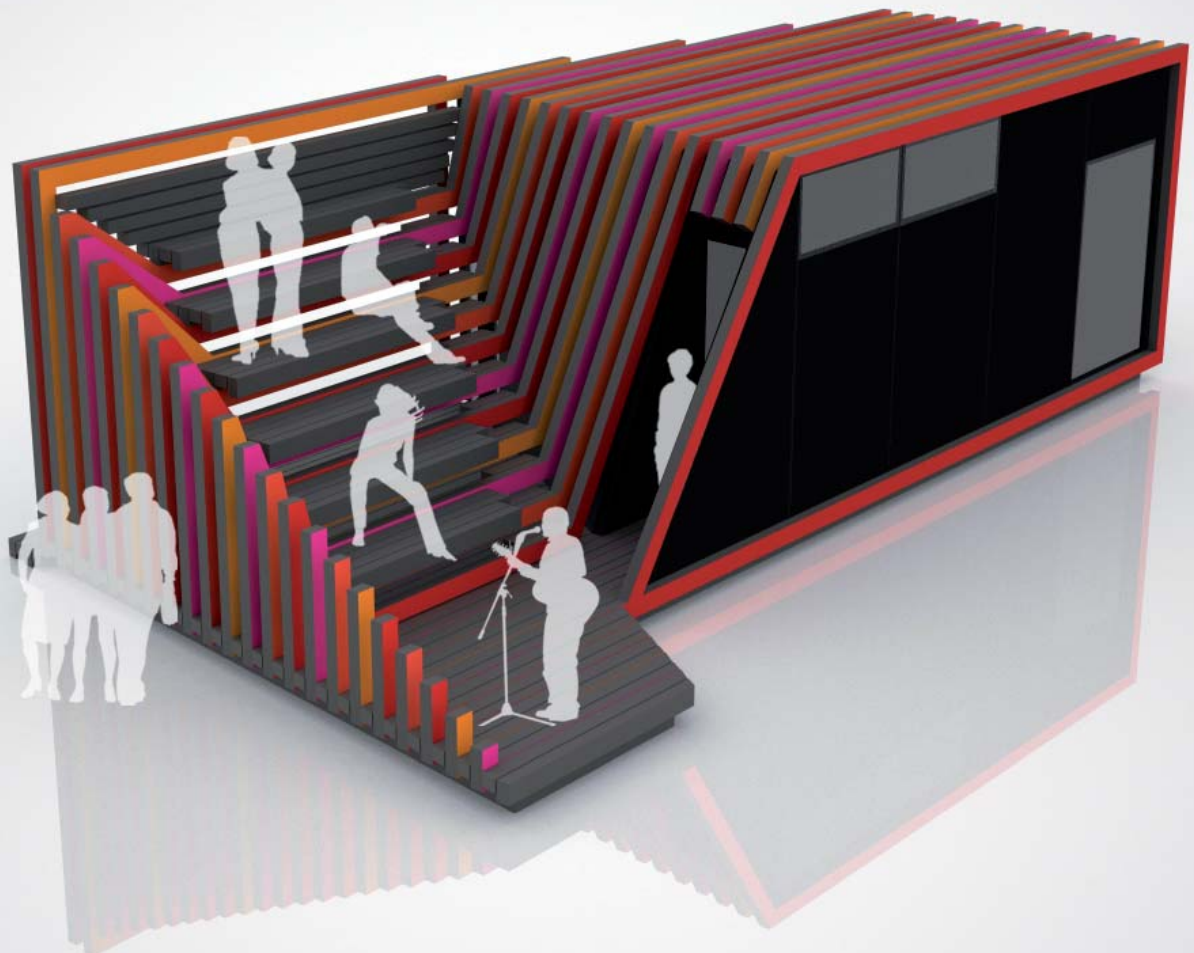
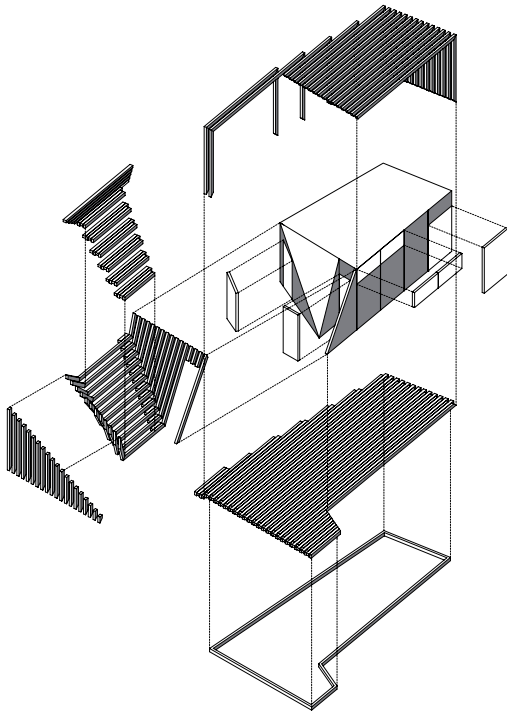
**Art Fund Pavilion**

45m<sup>2</sup> Seasonal Exhibition Pavilion

Surrey, UK

Design 2009

Architectural Competition





**East Darling Harbour**

Urban Design Masterplan

22 hectares

330,000m<sup>2</sup> mixed-use program

Sydney, NSW

Competition Design 2005

Matthew Gribben Architecture in collaboration with Fox Johnston,  
Korsanos & Associates Urban Design, 360° Landscape Architecture



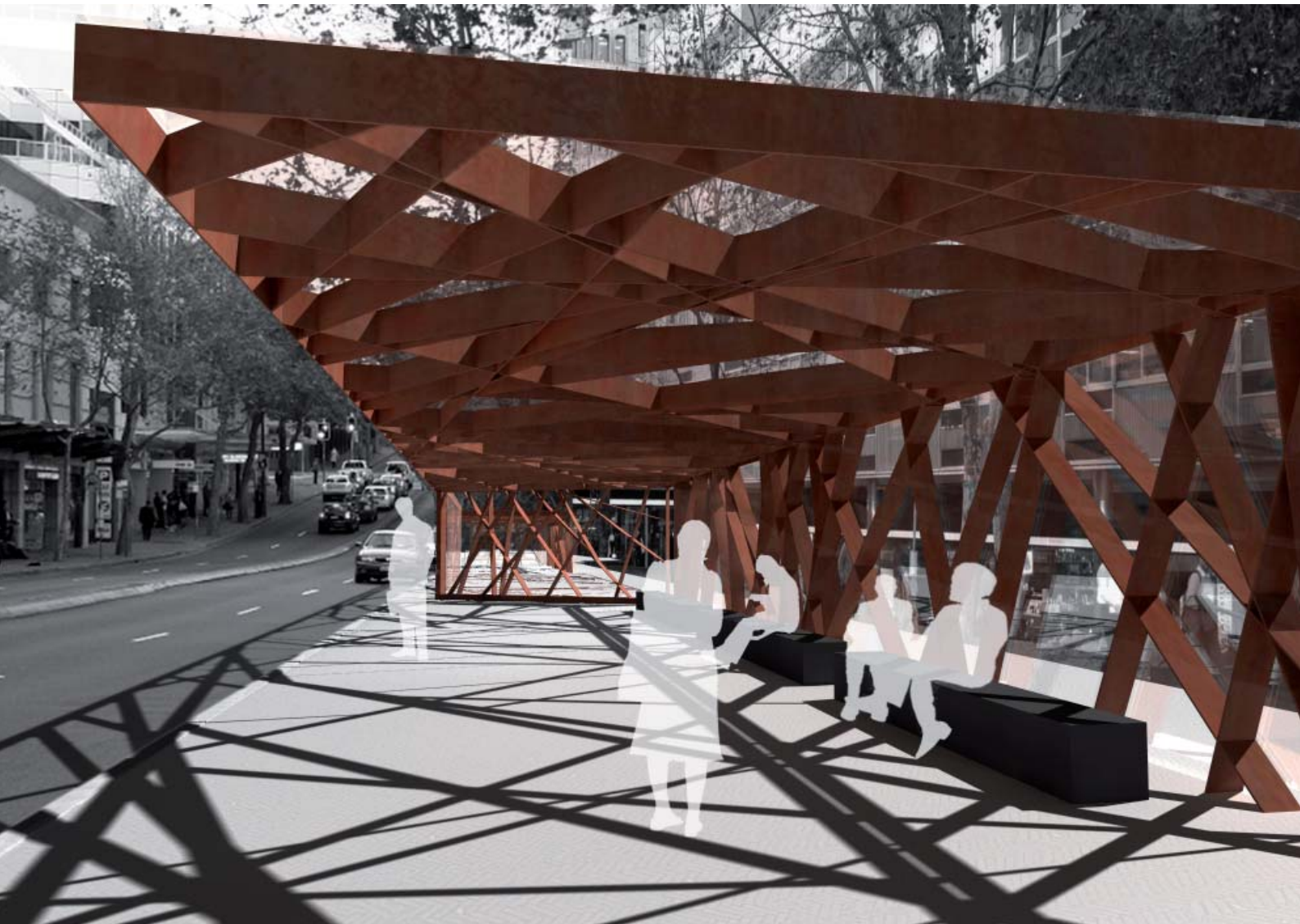
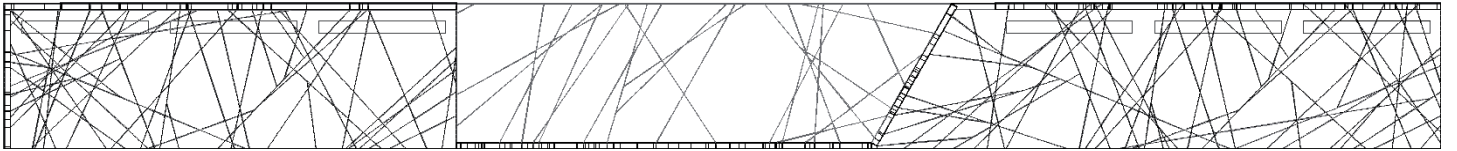


East Darling Harbour

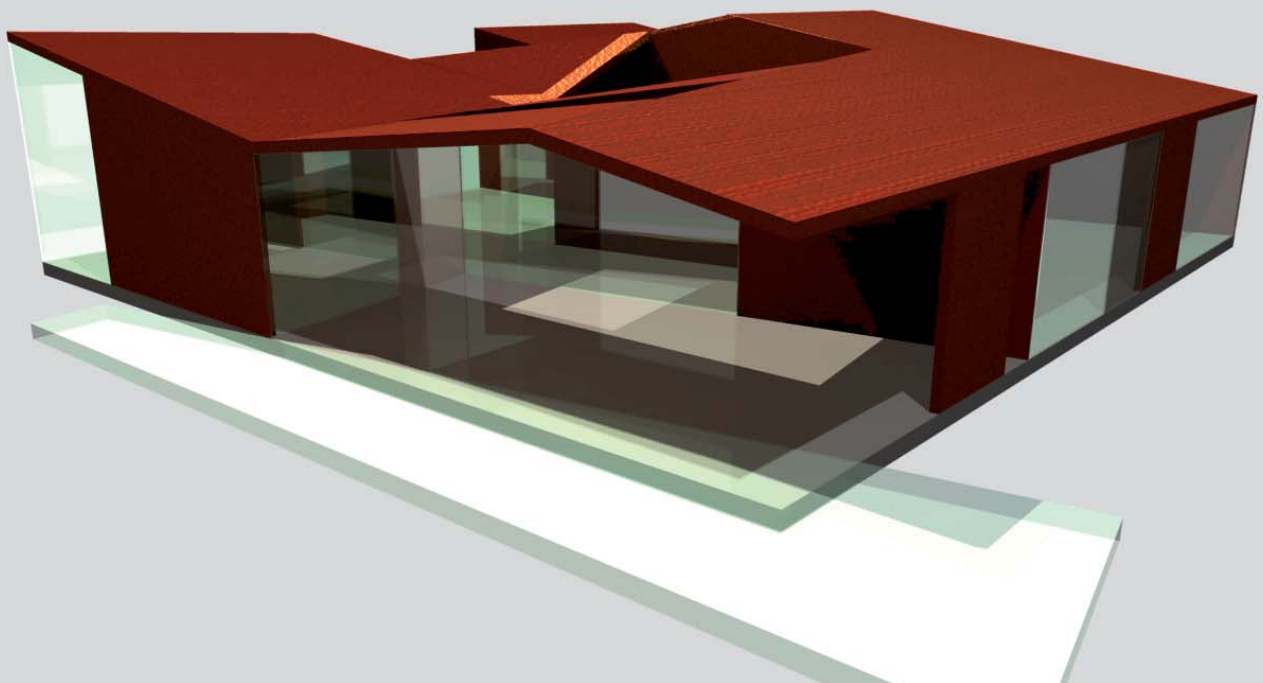
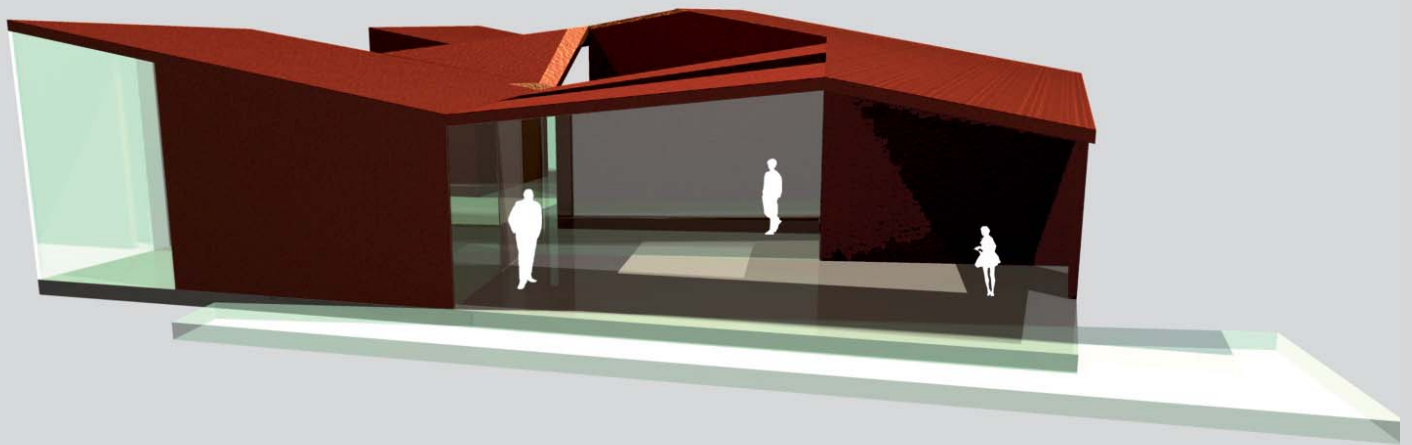
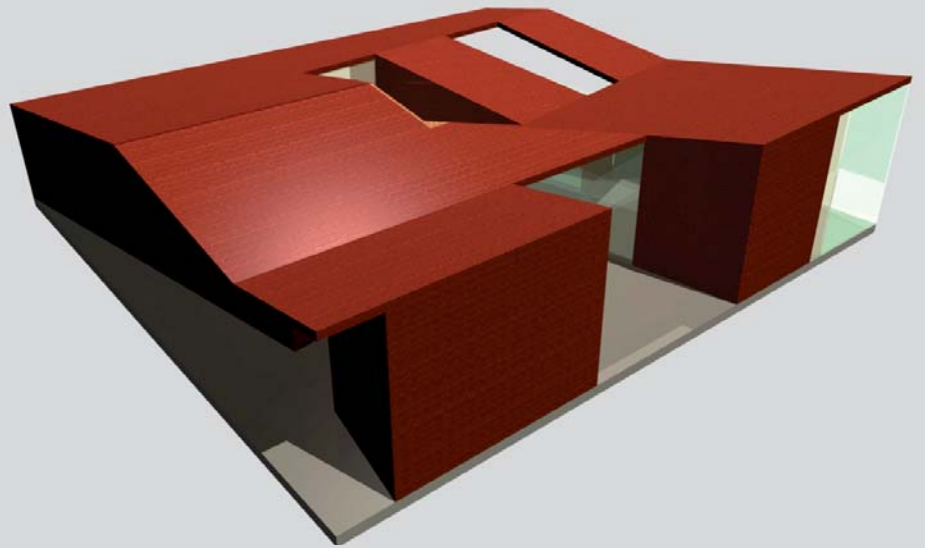




**North Sydney Centre**  
Bus Shelters & Underground Canopy Urban Design  
North Sydney, NSW  
Design 2006  
Architectural Competition

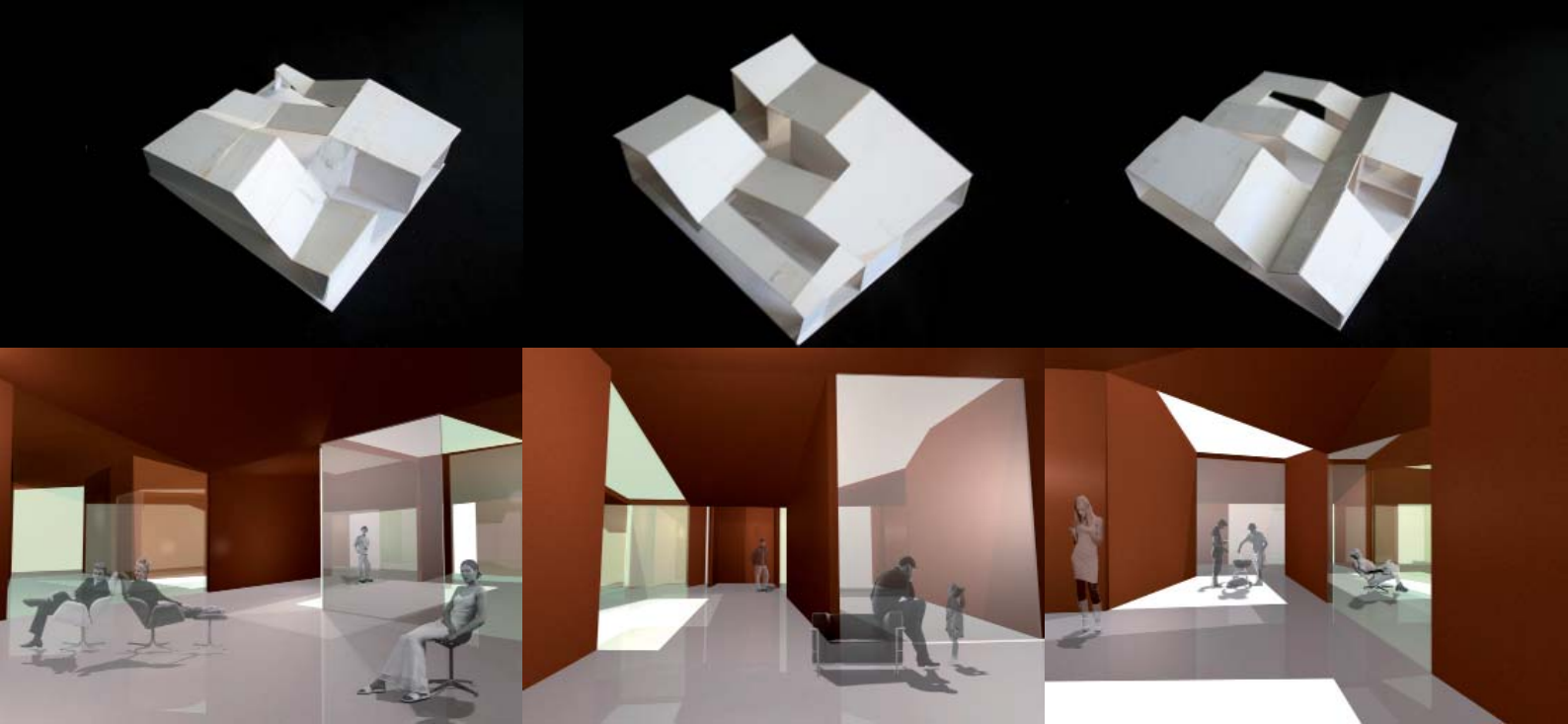
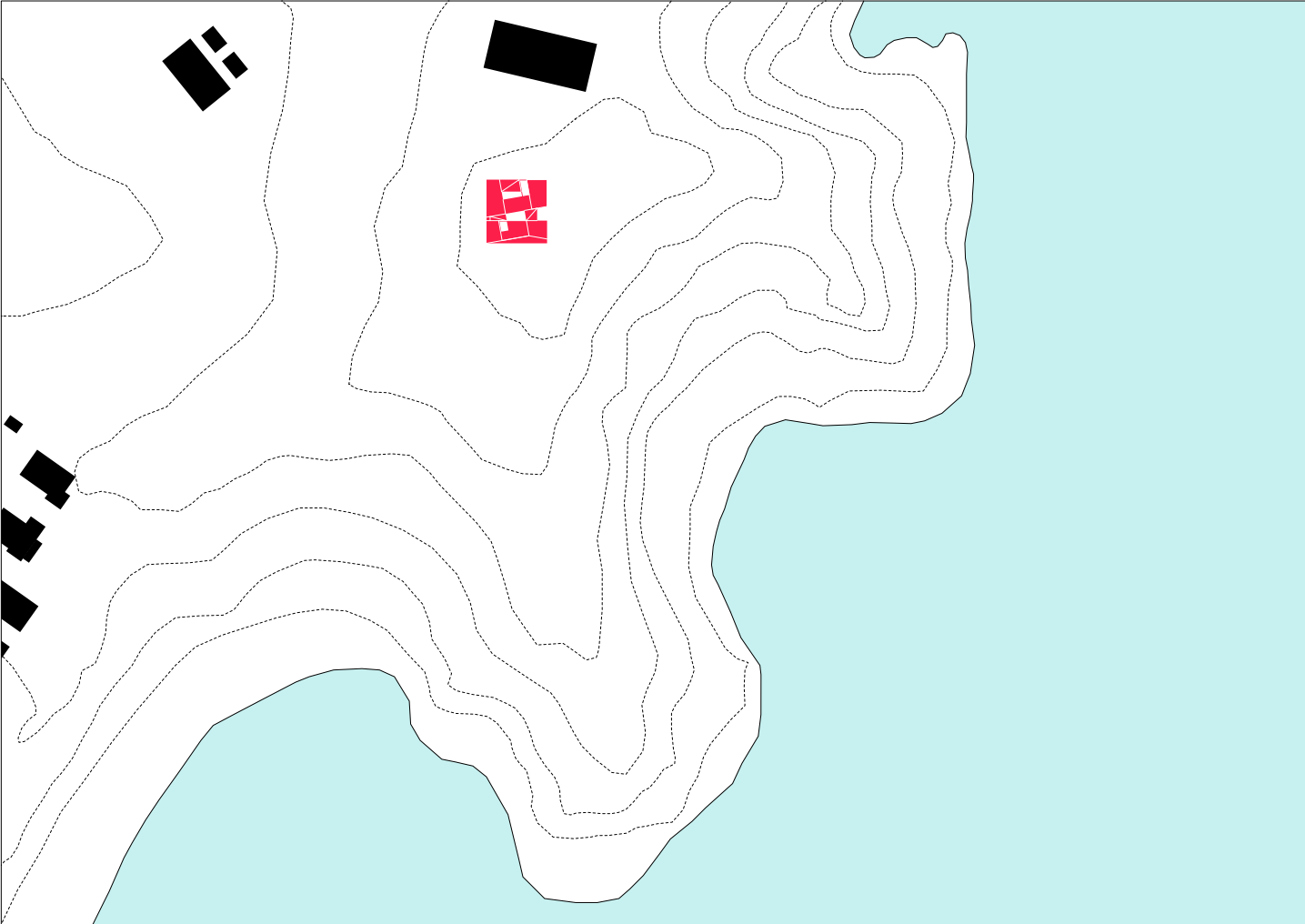


**Paykel/Greenwood House**  
275m<sup>2</sup> weekend house  
Waiheke Island, New Zealand  
Design 2003

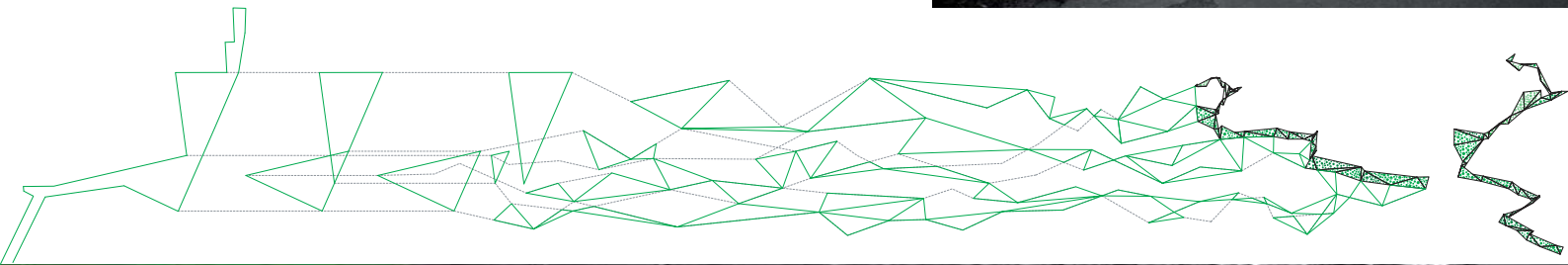




Paykel/Greenwood House



**St Peters Plaza**  
Railway Station Plaza Urban Design  
Sydney, NSW  
Design 2003  
Architectural Competition





## **Matthew Gribben curriculum vitae**

University of Auckland  
Auckland, New Zealand  
Bachelor of Architecture **1988-1992**

Architects Registration Board of Victoria  
Melbourne, Australia  
Registered Architect **1997**

### **professional**

**Matthew Gribben Architecture**  
Sydney, Australia  
Principal **2002-present**

**Herzog & de Meuron**  
Basel, Switzerland & San Francisco, CA  
Project Architect **1998-2002**

**Metier3 Architects**  
Melbourne, Australia  
Architect **1994-1997**

**Architecture Workshop**  
Wellington, New Zealand  
Architect **1993-1994**

### **academic**

University of New South Wales, Faculty of the Built Environment  
Sydney, NSW  
Design tutor, 5<sup>th</sup> year design studio **2006-2007**  
Visiting critic, 4<sup>th</sup> & 5<sup>th</sup> year design studio **2004-2010**

University of Sydney, Faculty of Architecture, Design & Planning  
Sydney, NSW  
Design tutor, 4<sup>th</sup> & 5<sup>th</sup> year design studio **2002-2003**  
Visiting critic, 4<sup>th</sup> & 5<sup>th</sup> year design studio **2004-2010**

California College of Arts & Crafts, School of Architecture  
San Francisco, CA  
Visiting critic, 3<sup>rd</sup> Year Design Studio, Semester 2 **2001**

## awards/prizes

New Aging Award 2010, University of Pennsylvania Honourable Mention [California Senior Housing]	<b>2010</b>
NZIA (New Zealand Institute of Architects) Award for Architecture/Shortlisted [Pohutukawa House]	<b>2008</b>
NZIA (New Zealand Institute of Architects) Award for Architecture/Shortlisted [Paparehia House]	<b>2006</b>
NZIA (New Zealand Institute of Architects) Award for Architecture [Tautari House]	<b>2005</b>
Butel Park Ski Chalets-Modular Housing, Arrowtown, NZ Architectural Competition, 1 <sup>st</sup> prize	<b>2003</b>
Schiavello Exhibition Stand, Melbourne, VIC & Frankfurt, D COMFIA Exhibition Design Prize	<b>1997</b>
PLEA [Passive Low-Energy Architecture] "Auckland Futures" International Sustainable Architectural Competition, 2 <sup>nd</sup> prize	<b>1992</b>

## exhibitions/lectures

Gallery of Australian Design (GAD), Canberra, ACT 'Abundant Highlights' exhibition, 01.07.10-24.07.10	<b>2010</b>
National Art Gallery Malaysia, Kuala Lumpur, Malaysia 'Abundant Highlights' exhibition, 19.04.10-30.05.10	<b>2010</b>
Novato Arts Center at Hamilton Field, Novato, CA Sustainable Housing Design exhibition, 29.01.10-30.02.10	<b>2010</b>
Singapore Design Festival, Singapore 'Abundant Highlights' exhibition, 30.11.09-07.02.10	<b>2009</b>
Bangkok Art & Culture Centre, Bangkok, Thailand 'Abundant Highlights' exhibition, 08.09.09-25.09.09	<b>2009</b>
State of Design Festival, Melbourne, VIC 'Abundant Highlights' exhibition, 15.07.09-25.07.09	<b>2009</b>
Object Gallery, Sydney, NSW 'Abundant Highlights' exhibition, 07.02.09-05.04.09	<b>2009</b>
11 <sup>th</sup> Architecture Biennale, Venice, Italy Abundant Australia exhibition, 14.09.08-23.11.08	<b>2008</b>
Object Gallery, Sydney, NSW Supermodels exhibition, 02.09.06-24.09.06	<b>2006</b>
Royal Australian Institute of Architects, Sydney, NSW Lecture: 6 June 2005	<b>2005</b>
Royal Australian Institute of Architects, Sydney, NSW Lecture: 27 September 2004	<b>2004</b>
3A Garage Architecture Gallery, San Francisco, CA Young West Coast Architects exhibition, 03.09.01-27.09.01	<b>2001</b>



## **publications**

Architecture Australia, Melbourne, Sept/Oct 2010	<b>Sept 2010</b>
Architecture Australia, Melbourne, May/June 2010	<b>May 2010</b>
Houses, Auckland, Issue 14, Summer 2009	<b>Dec 2009</b>
Abundant Australia Exhibition Catalogue, ACT, Sept 2008	<b>Sept 2008</b>
Home Magazine, The Daily Telegraph, Sydney, 27.01.07	<b>Jan 2007</b>
Vogue Living, Sydney, Sept/Oct 2006	<b>Sept 2006</b>
On Holiday, Auckland, May 2006	<b>May 2006</b>
House & Garden, Auckland, May 2006	<b>May 2006</b>
Architecture New Zealand, Auckland, Mar/Apr 2006	<b>March 2006</b>
House & Garden, Auckland, March 2006	<b>March 2006</b>
NZIA Cross Section, Wellington, March 2006	<b>March 2006</b>
Bauwelt, Berlin, 1-2 2005, January 2005	<b>January 2005</b>
Central Courier, Sydney, Vol.2, No.37, 23.09.04	<b>Sept 2004</b>
Zyzyva Art Review, San Francisco, XVII, 2, Fall 2001	<b>Sept 2001</b>
NZIA Cross Section, Wellington, November 1998	<b>Nov 1998</b>
Architecture New Zealand, Auckland, July/Aug 1992	<b>July 1992</b>